

Duplexes

Existing Duplex Plan

Oahu

A, B & C



Campus Planning and Construction

Two-Family Residence

55-425 & 55-425A
MOANA STREET
LAIE, HI 96762

JOB CODE - 007101



OAHU - B

DATE: 02/28/17
ISSUANCE: 02/28/17
REV. NO. 01
DESCRIPTION: BID SET - 01
REV. NO. 02
DESCRIPTION: BID SET - 02

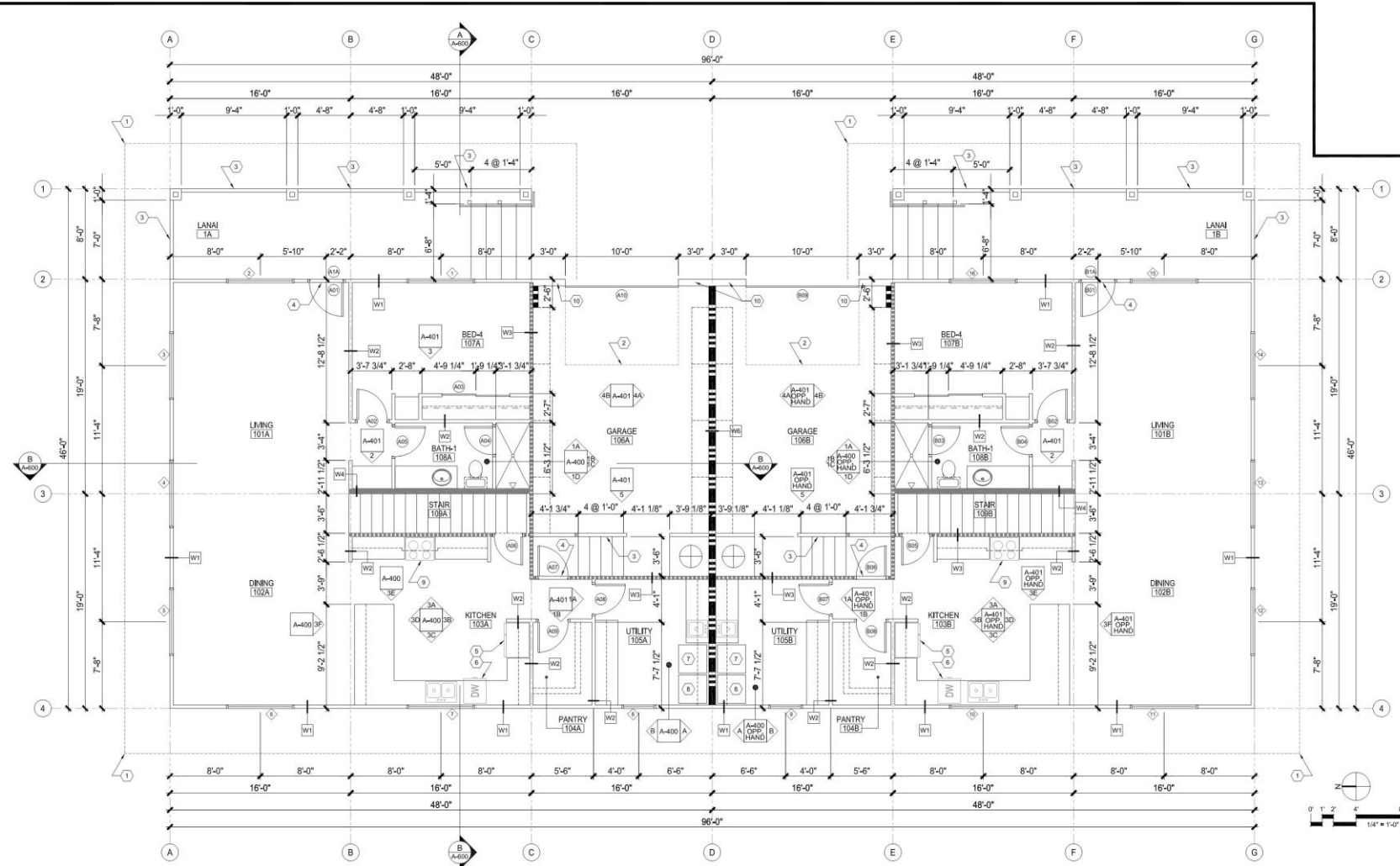
REV. NO. DATE: DESCRIPTION:

FLOOR PLAN - LOWER LEVEL

SPACE PLANNERS: JRB
DRAWN BY: JRB
REVIEWED BY: BT

Sheet Number

A-200



A FLOOR PLAN - LOWER LEVEL
SCALE: 1/4" = 1'-0"

PARTITION LEGEND		RATING
W1	2x4 STUDS @ 16" O.C. W/ 1/2" UN-RATED GYP. BD. INT. FACE & 1/2" PLYWD. & CEM. PLASTER EXT. FACE	NR
W2	2x4 STUDS @ 16" O.C. W/ 1/2" UN-RATED GYP. BOARD BOTH FACES	NR
W3	2x4 STUDS @ 16" O.C. W/ 5/8" TYPE "X" GYP. BOARD BOTH FACES	1 HOUR
W4	2x6 STUDS @ 16" O.C. W/ 1/2" UN-RATED GYP. BOARD BOTH FACES	NR
W5	2x4 STUDS @ 16" O.C. W/ 5/8" TYPE "X" GYP. BOARD ON OUTSIDE FACES	1 HOUR
W6	2x6 STUDS @ 16" O.C. W/ 5/8" TYPE "X" GYP. BOARD ON BOTH FACES	1 HOUR

KEYNOTES	
1	EXTENT OF ROOF OVERHANG
2	EXTENT OF OVERHEAD GARAGE DOOR
3	RAILING (SEE EXTERIOR ELEV.)
4	METAL THRESHOLD AND WEATHER STRIPPING
5	REFRIGERATOR
6	DISH WASHER
7	WASHING MACHINE
8	DRYER
9	STOVE / OVEN
10	2x8 STUDS @ 16" O.C.

Existing Duplex Plan

Oahu

A, B & C



Campus Planning and Construction

Two-Family Residence

55-425 & 55-425A
MOANA STREET
LAIE, HI 96762

JOB CODE - 007101



OAHU - B

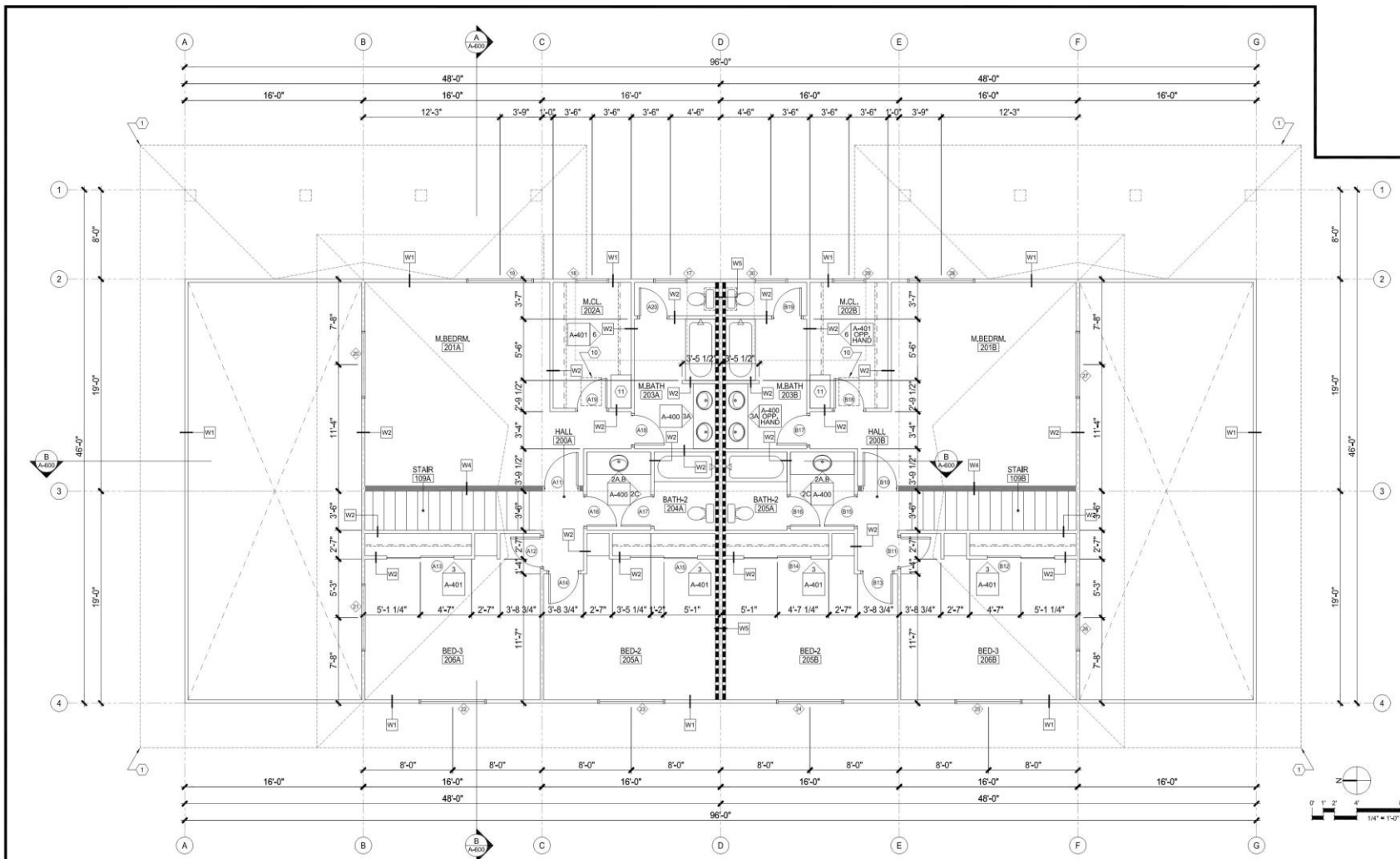
DATE: 02/28/17
ISSUANCE: BID SET - 01

REV. NO. DATE: DESCRIPTION:

FLOOR PLAN - UPPER LEVEL

SPACE PLANNER: JRB
DRAWN BY: JRB
REVIEWED BY: BT

Sheet Number
A-201



A FLOOR PLAN - UPPER LEVEL
SCALE: 1/4" = 1'-0"

PARTITION LEGEND	RATING
W1	NR
W2	NR
W3	1 HOUR
W4	NR
W5	1 HOUR
W6	1 HOUR

KEYNOTES
1 EXTENT OF ROOF OVERHANG
2 EXTENT OF OVERHEAD GARAGE DOOR
3 RAILING (SEE EXTERIOR ELEV.)
4 METAL THRESHOLD AND WEATHER STRIPPING
5 REFRIGERATOR
6 DISH WASHER
7 WASHING MACHINE
8 DRYER
9 STOVE / OVEN
10 22"x30" ATTIC SCUTTLE IN CEILING
11 WIRE SHELVING

Existing Duplex Plan

Oahu

A, B & C



Campus Planning and Construction

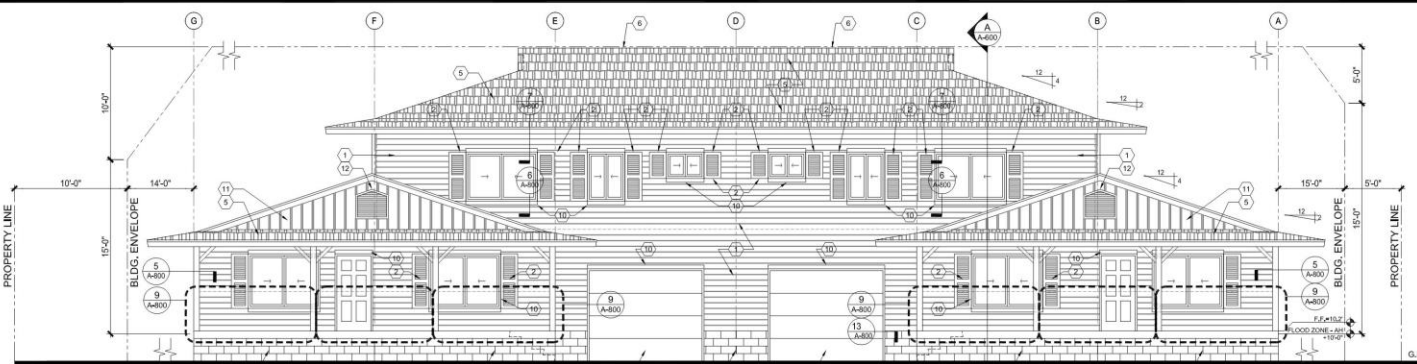
Two-Family Residence

55-425 & 55-425A
MOANA STREET
LAIE, HI 96762

JOB CODE - 007101

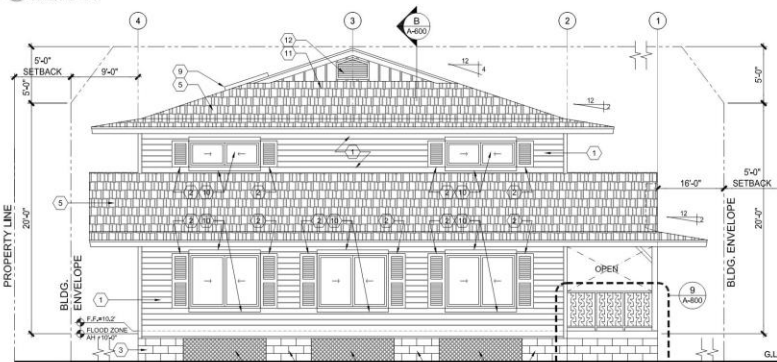


OAHU - B



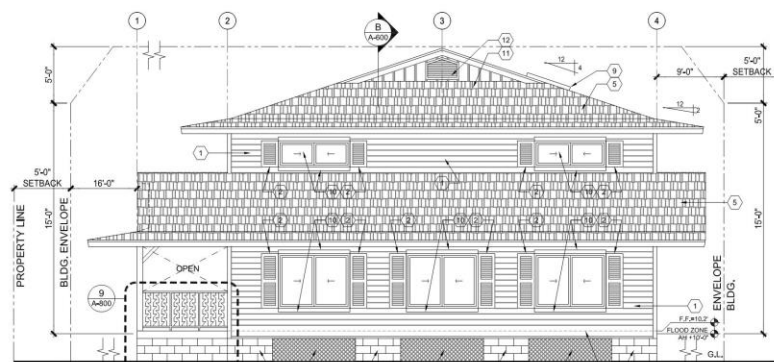
1 FRONT ELEVATION

SCALE: 3/16" = 1'-0"



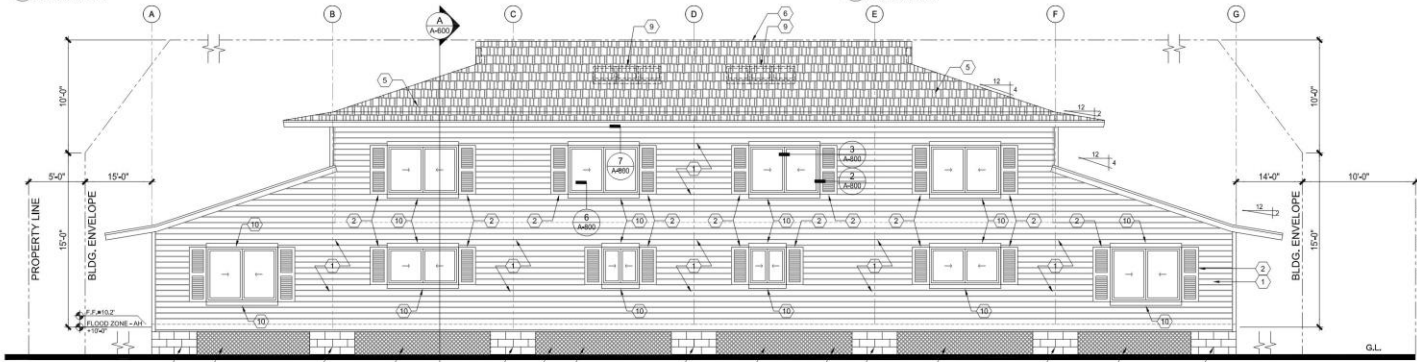
2 LEFT SIDE ELEVATION

SCALE: 3/16" = 1'-0"



3 RIGHT SIDE ELEVATION

SCALE: 3/16" = 1'-0"



4 REAR ELEVATION

SCALE: 3/16" = 1'-0"

EXTERIOR ELEVATIONS

KEY NOTES - EXTERIOR ELEVATIONS

- 1 CONCRETE SIDING MATERIAL
- 2 ARCHITECTURAL SHUTTER
- 3 PAINTED SPLIT FACE CMU
- 4 PRE-FINISHED FIBERGLASS LATTICE PANEL
- 5 ARCHITECTURAL COMPOSITION SHINGLES
- 6 CONTINUOUS VENT AT RIDGE
- 7 OVERHEAD GARAGE DOOR
- 8 EXTENT OF FINISHED FLOOR, BEYOND
- 9 SOLAR HOT WATER PANELS
- 10 ARCHITECTURAL TRIM
- 11 BOARD AND BATTEN SIDING
- 12 ARCHITECTURAL VENT
- 13 2x3 FLOOR ACCESS HATCH PANEL COVERED W/ ARCH. LATTICE TO MATCH ADJACENT SURFACE



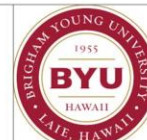
DATE:	ISSUANCE:	
02/28/17	IND SET - 01	
06/12/17	IND SET - 02	
REV. NO.	DATE	DESCRIPTION

EXTERIOR ELEVATIONS

SPACE PLANNER: JRB
DRAWN BY: JRB
REVIEWED BY: BT

Sheet Number:
A-300

New 3/3 Duplex Plan Maui



Campus Planning and Construction

Two-Family Residence

LAIE, HI 96762

JOB CODE - 000000



THIS DRAWING HAS BEEN PREPARED BY ME OR UNDER MY SUPERVISION AND CONTROL. I AM A LICENSED PROFESSIONAL ARCHITECT IN THE STATE OF HAWAII. MY LICENSE NUMBER IS 000000. I ACCEPT FULL PROFESSIONAL RESPONSIBILITY FOR THE ACCURACY AND COMPLETENESS OF THIS DRAWING. I HAVE REVIEWED ALL WORK PRODUCED HEREON AND I ACCEPT FULL PROFESSIONAL RESPONSIBILITY FOR THE ACCURACY AND COMPLETENESS OF ALL SUCH WORK. I HAVE REVIEWED ALL SUCH WORK AND I ACCEPT FULL PROFESSIONAL RESPONSIBILITY FOR THE ACCURACY AND COMPLETENESS OF ALL SUCH WORK.

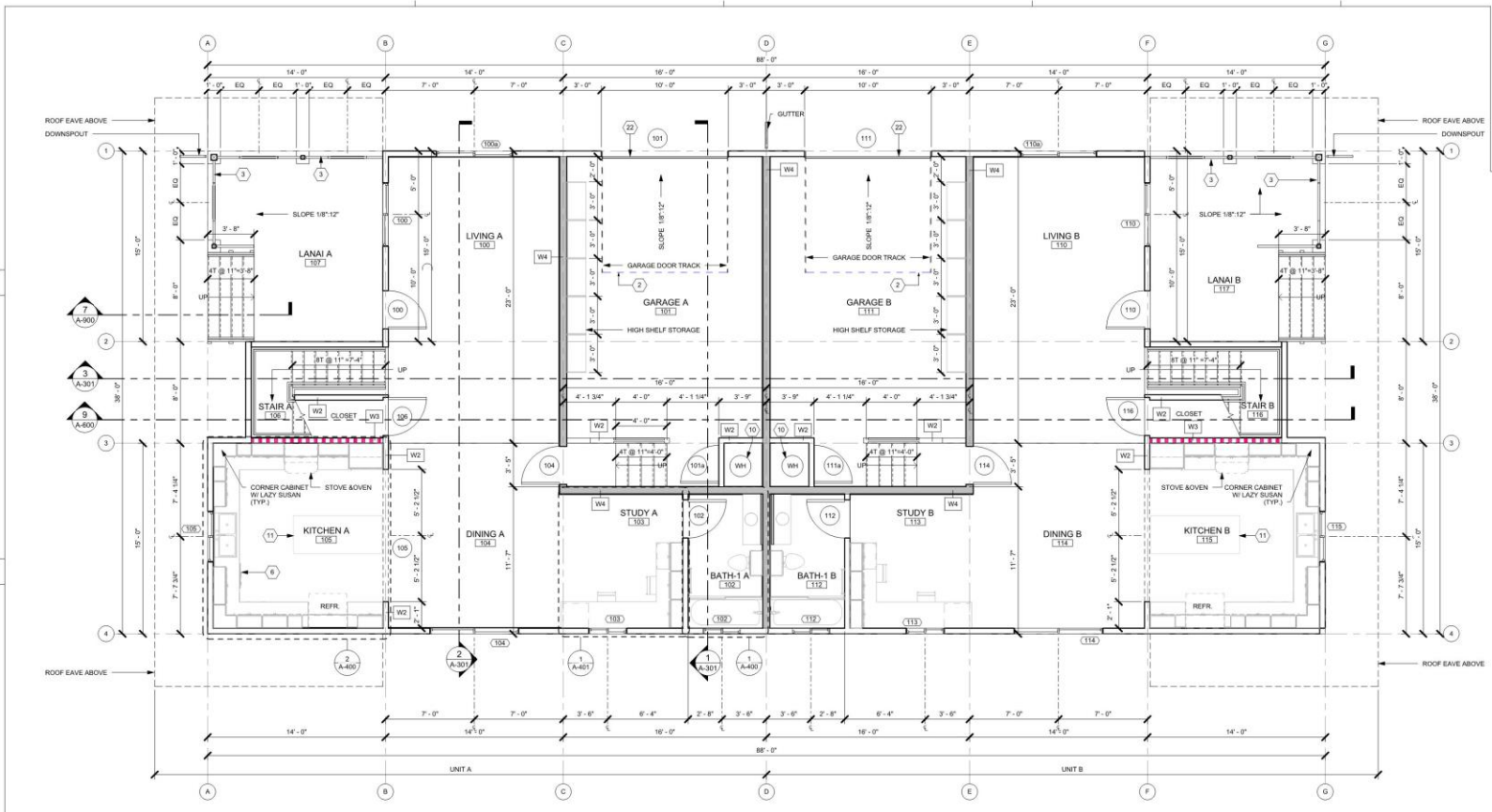
MAUI PLAN

DATE	ISSUANCE

FLOOR PLAN LEVEL 1

Architect: JRB
 Drawn By: VL
 Reviewed By: LJM

Sheet Number
A-111



A LEVEL 1 1/4" = 1'-0"

PARTITION LEGEND	RATING
	NR
	NR
	1 HOUR
	NR
	1 HOUR
	1 HOUR

KEYNOTES	
② EXTENT OF OVERHEAD GARAGE DOOR	
③ RAILING (SEE EXTERIOR ELEVATION)	
⑥ DISH WASHER	
⑩ WATER HEATER	
⑪ ISLAND COUNTERTOP	
⑳ OVERHEAD GARAGE DOOR	
* UNIT A & B ARE MIRROR IMAGES OFF OF GRID LINE D	



Copyright © 2018 Brigham Young University. All Rights Reserved.



New 3/3 Duplex Plan Maui



Campus Planning and Construction

Two-Family Residence

LAIE, HI 96762

JOB CODE - 000000



THIS SYSTEM HAS BEEN REVIEWED BY ME OR UNDER MY SUPERVISION AND CONSTRUCTION OF THE PROJECT WILL BE UNDER MY SUPERVISION. I AM NOT PROVIDING ANY GUARANTEE OR WARRANTY FOR THE PROJECT. I AM NOT PROVIDING ANY GUARANTEE OR WARRANTY FOR THE PROJECT. I AM NOT PROVIDING ANY GUARANTEE OR WARRANTY FOR THE PROJECT.

MAUI PLAN

DATE: 08/14/2018

DESIGNED BY: JVB

DRAWN BY: VJL

REVIEWED BY: LJM

SCALE: 1/4" = 1'-0"

SHEET NUMBER: A-112

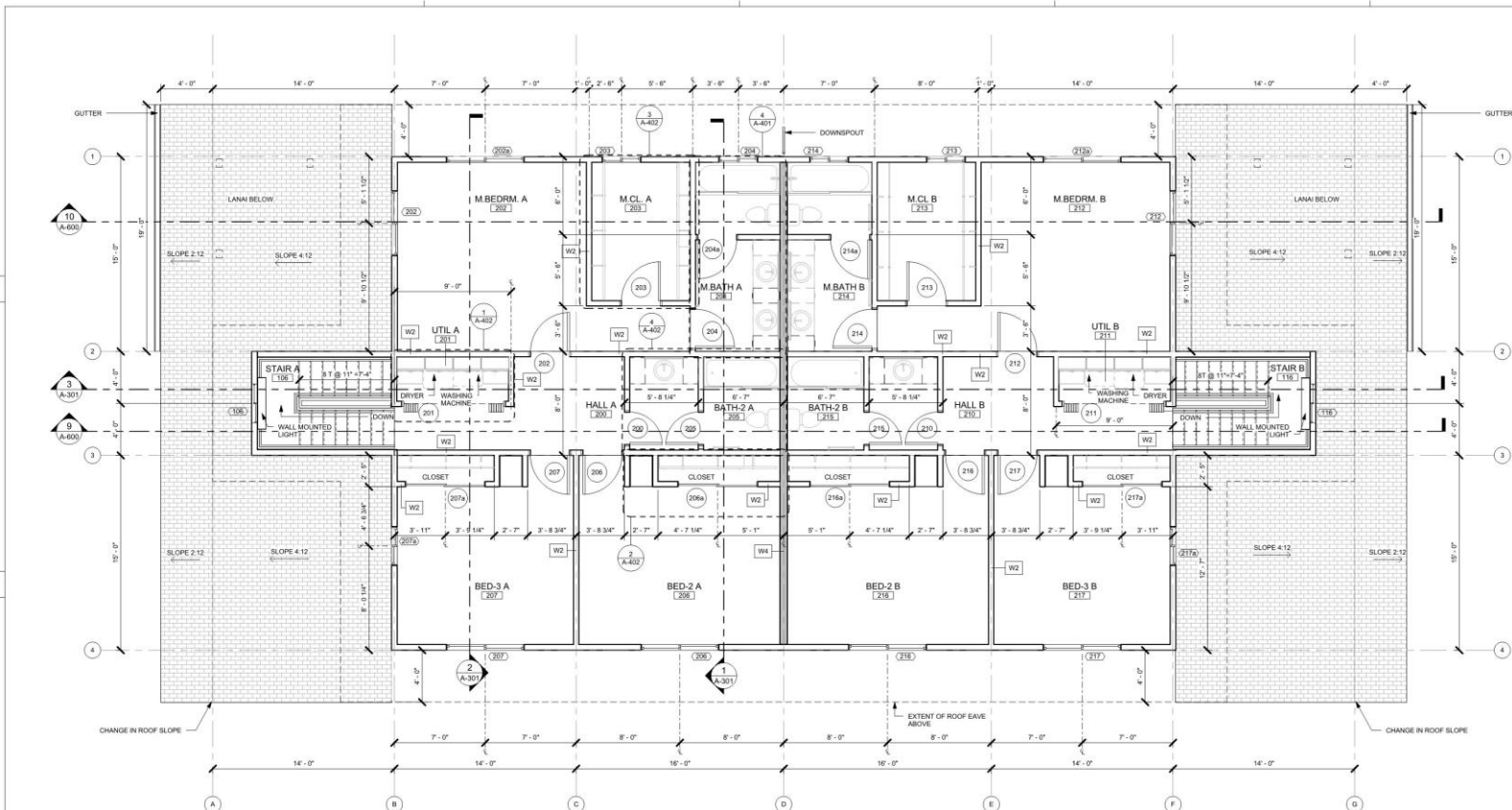
FLOOR PLAN LEVEL 2

Architect: JVB

Drawn By: VJL

Reviewed By: LJM

Sheet Number: A-112



A LEVEL 2
1/4" = 1'-0"

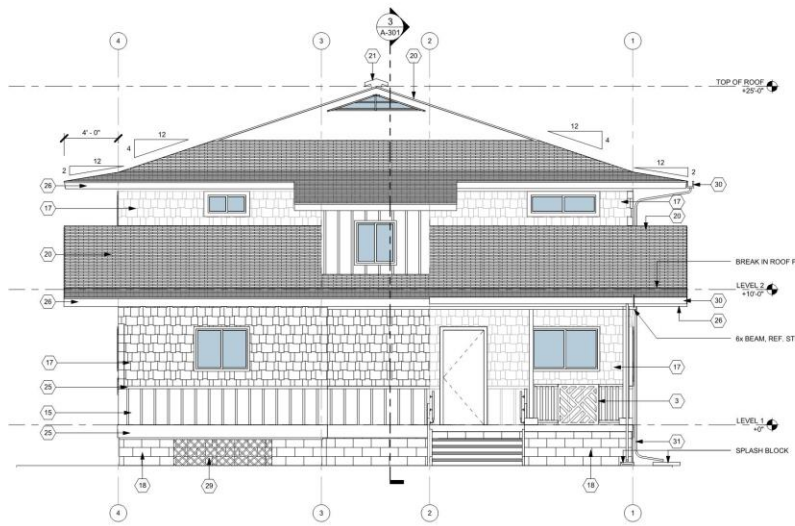
PARTITION LEGEND		RATING
	2X4 STUDS @ 16" O.C. W/5/8" UN-RATED GYP.BD. INT. FACE & 1/2" PLYWOOD & CEMENT PLASTER EXT. FACE WITH BATT INSULATION.	NR
	2X4 STUDS @ 16" O.C. W/5/8" UN-RATED GYP.BD. BOTH FACES WITH BATT INSULATION.	NR
	2X4 STUDS @ 16" O.C. W/5/8" TYPE-X GYP.BD. BOTH FACES, WITH BATT INSULATION.	1 HOUR
	2X8 STUDS @ 16" O.C. W/5/8" UN-RATED GYP.BD. BOTH FACES WITH BATT INSULATION.	NR
	2X4 STUDS @ 16" O.C. W/5/8" TYPE-X GYP.BD. ON OUTSIDE FACES WITH BATT INSULATION.	1 HOUR
	2X8 STUDS @ 16" O.C. W/5/8" TYPE-X GYP.BD. BOTH FACES WITH BATT INSULATION.	1 HOUR

KEYNOTES

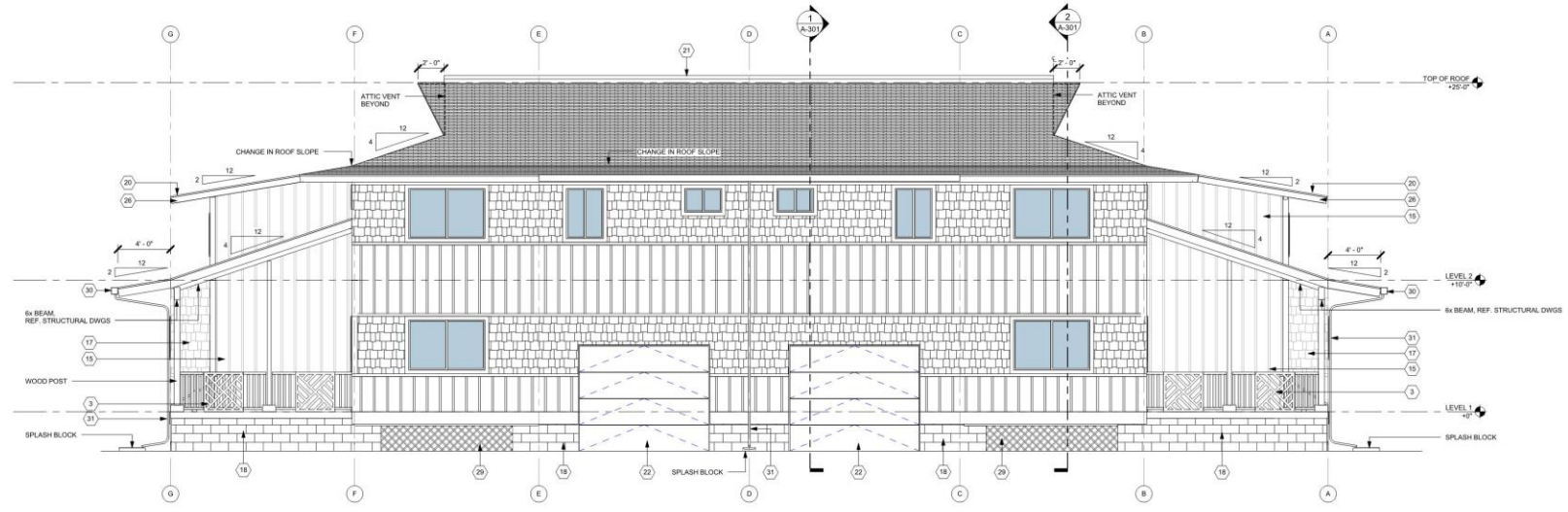
* UNIT A & B ARE MIRROR IMAGES OFF OF GRID LINE D



- KEYNOTES**
- ③ RAILING (SEE EXTERIOR ELEVATION)
 - 15 BOARD AND BATTEN SIDING
 - 17 CONCRETE SHINGLE PATTERN SIDING
 - 18 PAINTED SPLIT FACE CMU
 - 20 ARCHITECTURAL COMPOSITION SHINGLES
 - 21 CONTINUOUS VENT AT RIDGE
 - 22 OVERHEAD GARAGE DOOR
 - 23 ARCHITECTURAL TRIM BAND
 - 25 PAINTED FASCIA
 - 29 2X3 FLOOR ACCESS HATCH PANEL COVERED W/ARCH. LATTICE TO MATCH ADJACENT SURFACE
 - 30 GUTTER
 - 31 DOWNSPOUT



2 ELEVATION B
1/4" = 1'-0"



1 ELEVATION A
1/4" = 1'-0"



Campus Planning and Construction

Two-Family Residence

LAIE, HI 96762

JOB CODE - 000000



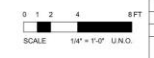
THIS WORK WAS DESIGNED BY ME OR UNDER MY CLOSE PERSONAL SUPERVISION AND CONTROL. I AM A LICENSED PROFESSIONAL ENGINEER IN THE STATE OF HAWAII. I HAVE NOT BEEN CONVICTED OF A CRIME RELATING TO THE PERFORMANCE OF MY PROFESSIONAL DUTIES. I HAVE NOT BEEN DISQUALIFIED FROM EXERCISING MY PROFESSIONAL RIGHTS BY ANY COURT OF COMPETENT JURISDICTION. I AM NOT PROVIDING SERVICES IN ANY STATE WHERE I AM NOT LICENSED. I AM NOT PROVIDING SERVICES IN ANY STATE WHERE I AM NOT LICENSED. I AM NOT PROVIDING SERVICES IN ANY STATE WHERE I AM NOT LICENSED.

MAUI PLAN

REV NO.	DATE	DESCRIPTION

EXTERIOR ELEVATIONS

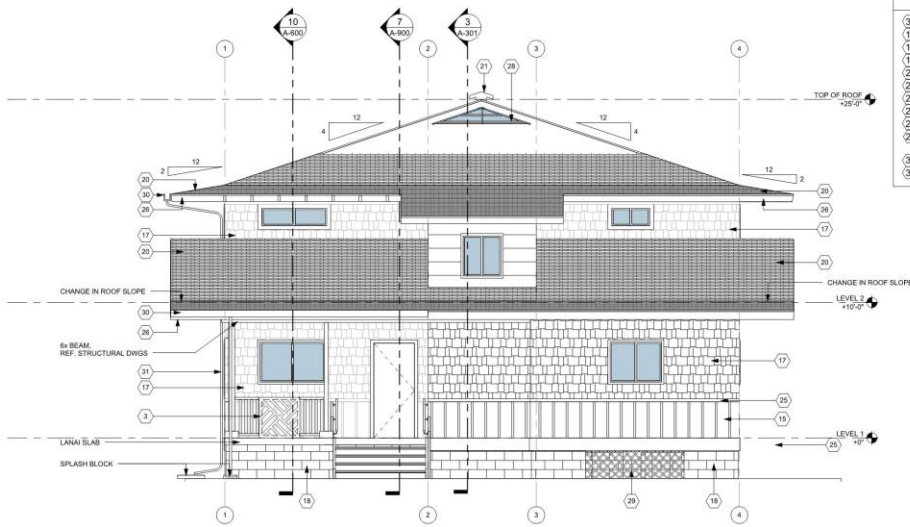
Architect: JRB
 Drawn By: VL
 Reviewed By: LJA
 Sheet Number: A-202



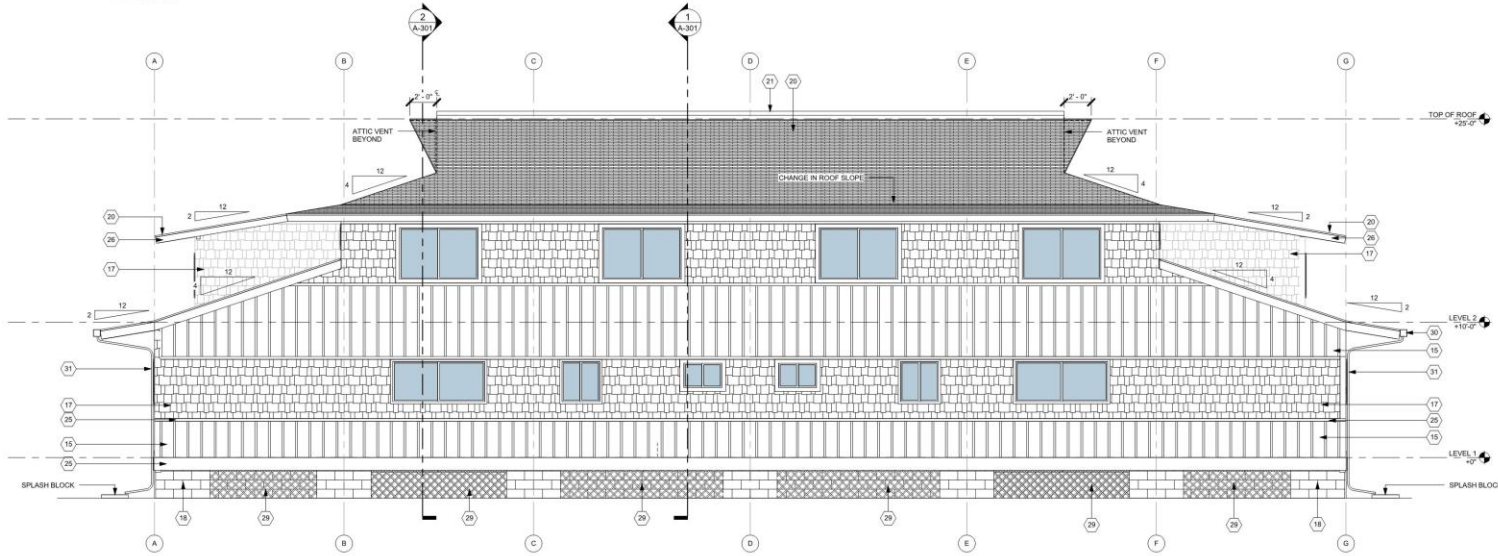
New 3/3
 Duplex Plan
Maui



- KEYNOTES
- 3 RAILING (SEE EXTERIOR ELEVATION)
 - 15 BOARD AND BATTEN SIDING
 - 17 CONCRETE SHINGLE PATTERN SIDING
 - 18 PAINTED SPLIT FACE CMU
 - 20 ARCHITECTURAL COMPOSITION SHINGLES
 - 21 CONTINUOUS VENT AT RIDGE
 - 25 ARCHITECTURAL TRIM BAND
 - 26 PAINTED FASCIA
 - 28 CUSTOM LOUVERS
 - 29 2'X3' FLOOR ACCESS HATCH PANEL COVERED W/ARCH. LATTICE TO MATCH ADJACENT SURFACE
 - 30 GUTTER
 - 31 DOWNSPOUT



2 ELEVATION D
1/4" = 1'-0"



1 ELEVATION C
1/4" = 1'-0"



Campus Planning and Construction

Two-Family Residence

LAIE, HI 96762

JOB CODE - 000000



THIS WORK HAS BEEN REVIEWED BY THE OFFICER OF THE BOARD OF PROFESSIONAL ENGINEERS AND ARCHITECTS OF THE STATE OF HAWAII AND IS SUBJECT TO THE JURISDICTION OF THE HAWAII ADMINISTRATIVE REVIEW BOARD FOR PROFESSIONAL ENGINEERS AND ARCHITECTS. (SEE HAWAII ADMINISTRATIVE REVIEW BOARD WEBSITE FOR THE LATEST REGULATORY CODES.)

MAUI PLAN

REV. NO.	DATE	DESCRIPTION

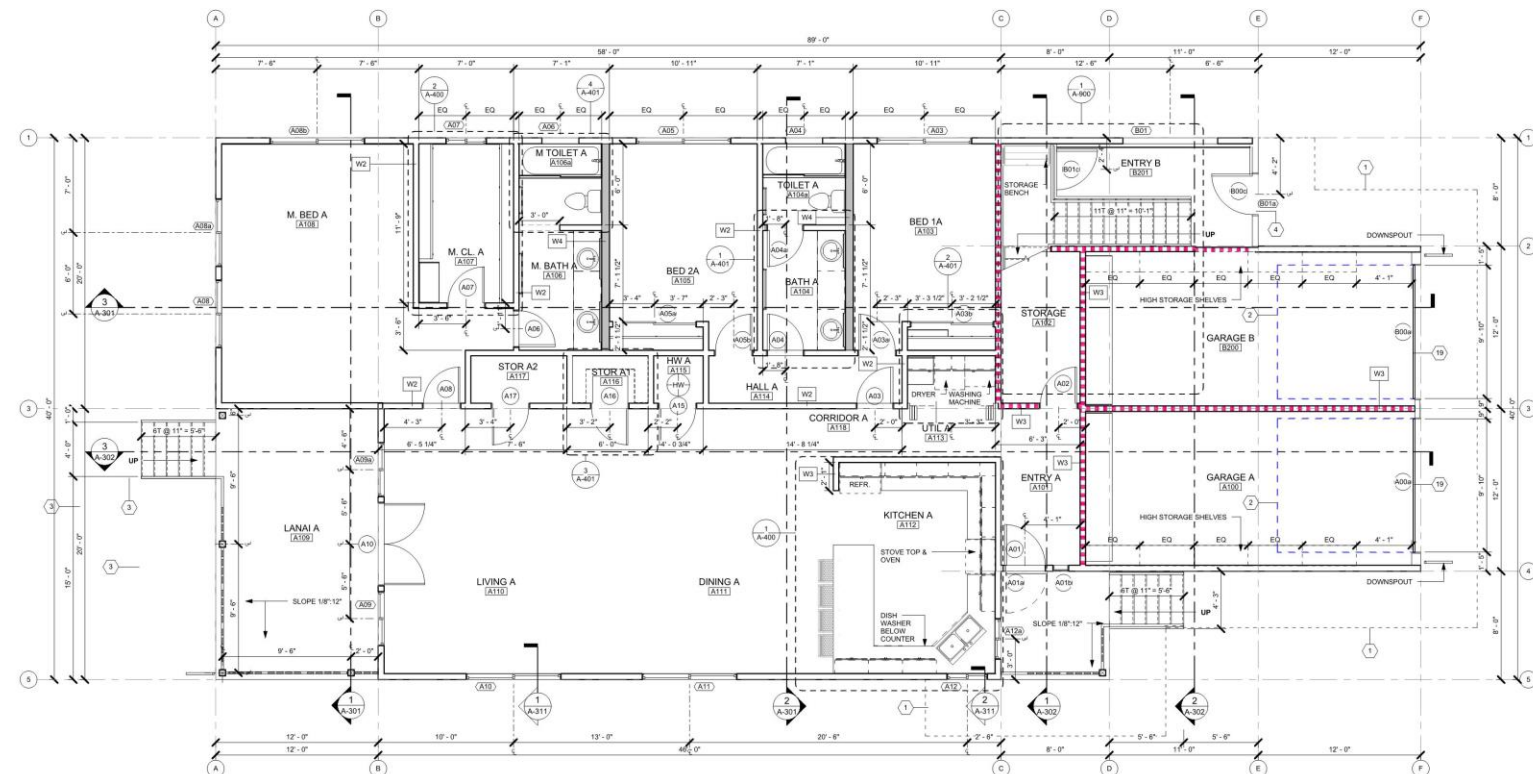
EXTERIOR ELEVATIONS

Architect: JRB
 Drawn By: VL
 Reviewed By: LJA
 Sheet Number: A-203



New 3/3
Duplex Plan
Maui





A FLOOR PLAN - LOWER LEVEL
 1/4" = 1'-0"

PARTITION LEGEND		
W1	2X4 STUD @ 16" O.C. W/5/8" UN-RATED GYP.BD. INT. FACE & 1/2" PLYWOOD & CEMENT PLASTER EXT. FACE	NR
W2	2X4 STUD @ 16" O.C. W/5/8" UN-RATED GYP.BD. BOTH FACES	NR
W3	2X4 STUD @ 16" O.C. W/5/8" TYPE-X GYP.BD. BOTH FACES	1 HOUR
W4	2X6 STUDS @ 16" O.C. W/5/8" UN-RATED GYP.BD. BOTH FACES WITH BATT INSULATION.	NR
W5	2X4 STUDS @ 16" O.C. W/5/8" TYPE-X GYP.BD. ON OUTSIDE FACES WITH BATT INSULATION.	1 HOUR
W6	2X8 STUDS @ 16" O.C. W/5/8" TYPE-X GYP.BD. BOTH FACES WITH BATT INSULATION.	1 HOUR

KEYNOTES		
1	EXTENT OF ROOF OVERHANG	
2	EXTENT OF OVERHEAD GARAGE DOOR	
3	RAILING (SEE EXTERIOR ELEVATION)	
4	METAL THRESHOLD AND WEATHER STRIPPING	
15	OVERHEAD GARAGE DOOR	



Campus Planning and Construction

Two-Family Residence

LAIE, HI 96762

JOB CODE - 000000



THIS DRAWING HAS BEEN PREPARED BY ME OR UNDER MY SUPERVISION AND CONSTRUCTION OF THE PROJECT WILL BE UNDER MY SUPERVISION AND I AM A PROFESSIONAL ENGINEER LICENSED IN THE STATE OF HAWAII. I AM PROVIDING THIS SERVICE TO YOU UNDER MY PROFESSIONAL LIABILITY DEFENSE/DEFECTIVE WORKERS' COMPENSATION POLICY.

FLAT PLAN

DATE	REVISION

REV. NO.	DATE	DESCRIPTION

FLOOR PLAN LEVEL 1

Space Planner: JRB
 Drawn By: VL
 Reviewed By: LHM
 Sheet Number: A-111

New Stacked Duplex Plan Flat

New Stacked Duplex Plan Flat



Campus Planning and Construction

Two-Family Residence

LAIE, HI 96762

JOB CODE - 000000



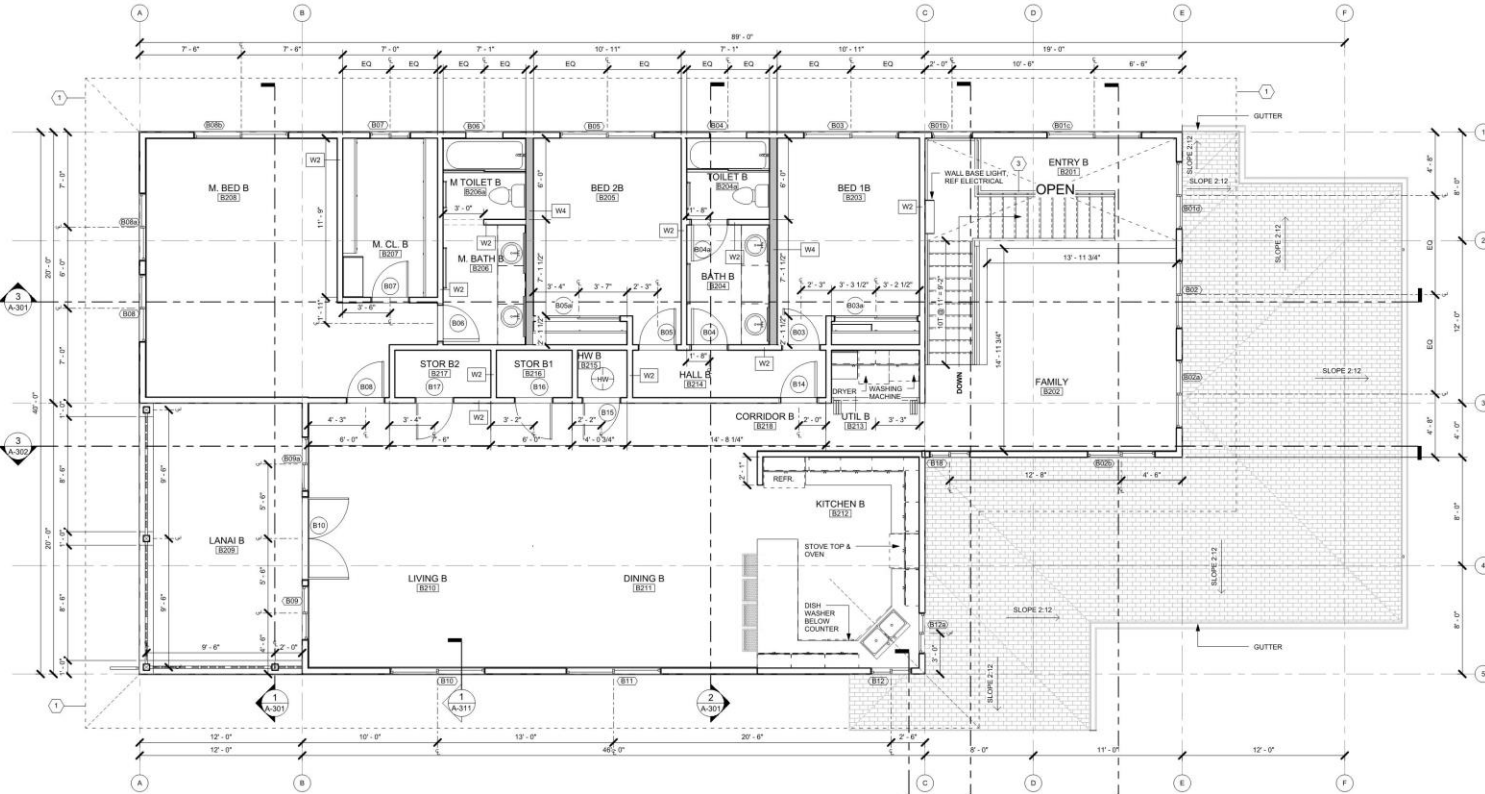
THIS DRAWING HAS BEEN PROVIDED BY ME OR UNDER MY CLOSE PERSONAL SUPERVISION AND CONSTRUCTION OF THE PROJECT WILL BE UNDER MY CLOSE PERSONAL SUPERVISION. I AM A PROFESSIONAL ENGINEER, LICENSED TO PRACTICE ENGINEERING IN THE STATE OF HAWAII. I AM NOT PROVIDING CONTRACT ADMINISTRATION OR CONSTRUCTION MANAGEMENT SERVICES.

FLAT PLAN

DATE	ISSUANCE

FLOOR PLAN LEVEL 2

Space Planner JRB
 Drawn By VL
 Reviewed By LM
 Sheet Number
A-112



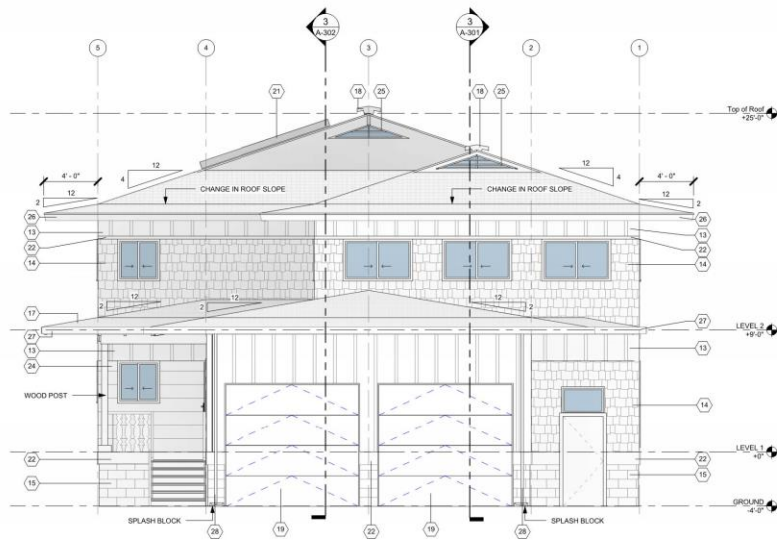
A FLOOR PLAN - UPPER LEVEL
 1/4" = 1'-0"

PARTITION LEGEND		RATING
W1	2X4 STUD @ 16" O.C. W/5/8" UN-RATED GYP.BD. INT. FACE & 1/2" PLYWOOD & CEMENT PLASTER EXT. FACE	NR
W2	2X4 STUD @ 16" O.C. W/5/8" UN-RATED GYP.BD. BOTH FACES	NR
W3	2X4 STUD @ 16" O.C. W/5/8" TYPE-X GYP.BD. BOTH FACES	1 HOUR
W4	2X6 STUD @ 16" O.C. W/5/8" UN-RATED GYP.BD. BOTH FACES	NR
W5	2X4 STUD @ 16" O.C. W/5/8" TYPE-X GYP.BD. ON OUTSIDE FACES	1 HOUR
W6	2X8 STUD @ 16" O.C. W/5/8" TYPE-X GYP.BD. BOTH FACES	1 HOUR

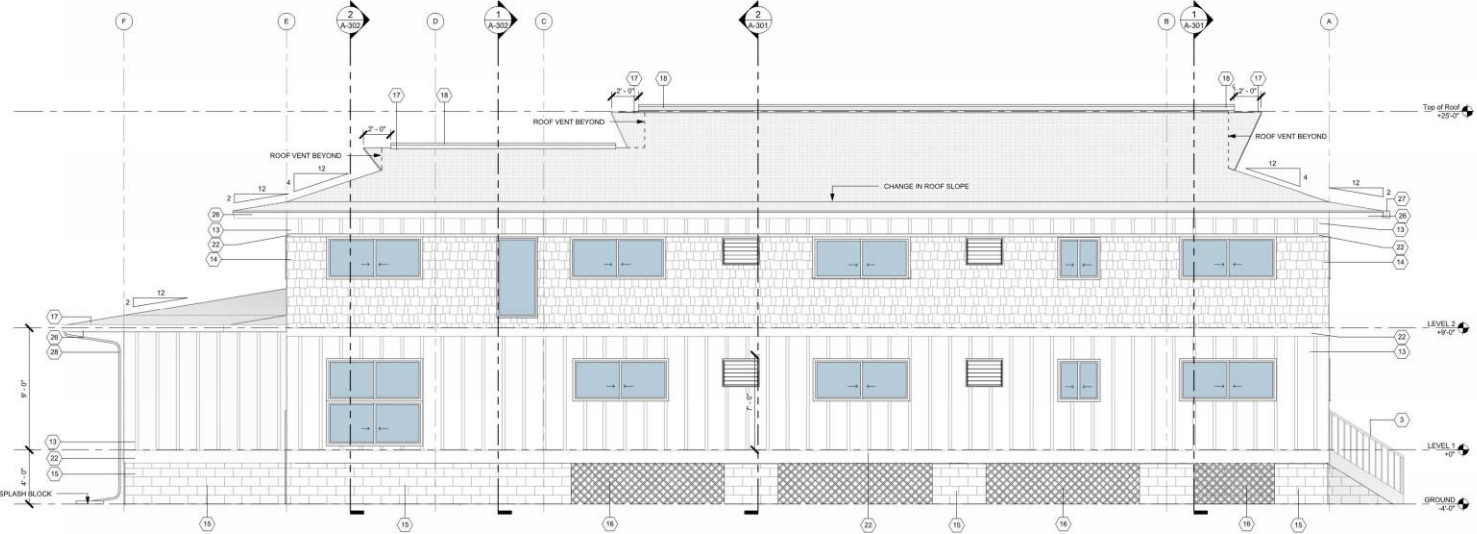
KEYNOTES	
①	EXTENT OF ROOF OVERHANG
②	RAILING (SEE EXTERIOR ELEVATION)
○	
○	
○	

Copyright 2015 by Brigham Young University. All rights reserved.

- KEYNOTES**
- 5) RAILING (SEE EXTERIOR ELEVATION)
 - 13) BOARD AND BATTEN SIDING
 - 14) CONCRETE SHINGLE PATTERN SIDING
 - 15) PAINTED SPLIT FACE CMU
 - 16) PRE-FINISHED FIBERGLASS LATTICE PANEL
 - 17) ARCHITECTURAL COMPOSITION SHINGLES
 - 18) CONTINUOUS VENT AT RIDGE
 - 19) OVERHEAD GARAGE DOOR
 - 21) SOLAR HOT WATER PANELS
 - 22) ARCHITECTURAL TRIM BAND
 - 24) SMOOTH LAP SIDING
 - 25) CUSTOM LOUVERS
 - 26) PAINTED FASCIA
 - 27) GUTTER
 - 28) DOWNSPOUT



2 ELEVATION B
1/4" = 1'-0"



1 ELEVATION A
1/4" = 1'-0"



Campus Planning and Construction

Two-Family Residence

LAIE, HI 96762

JOB CODE - 000000



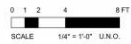
FLAT PLAN

DATE	ISSUANCE

REV. NO.	DATE	DESCRIPTION

EXTERIOR ELEVATIONS

Space Planner JRB
 Drawn By VL
 Reviewed By LM
 Sheet Number A-201



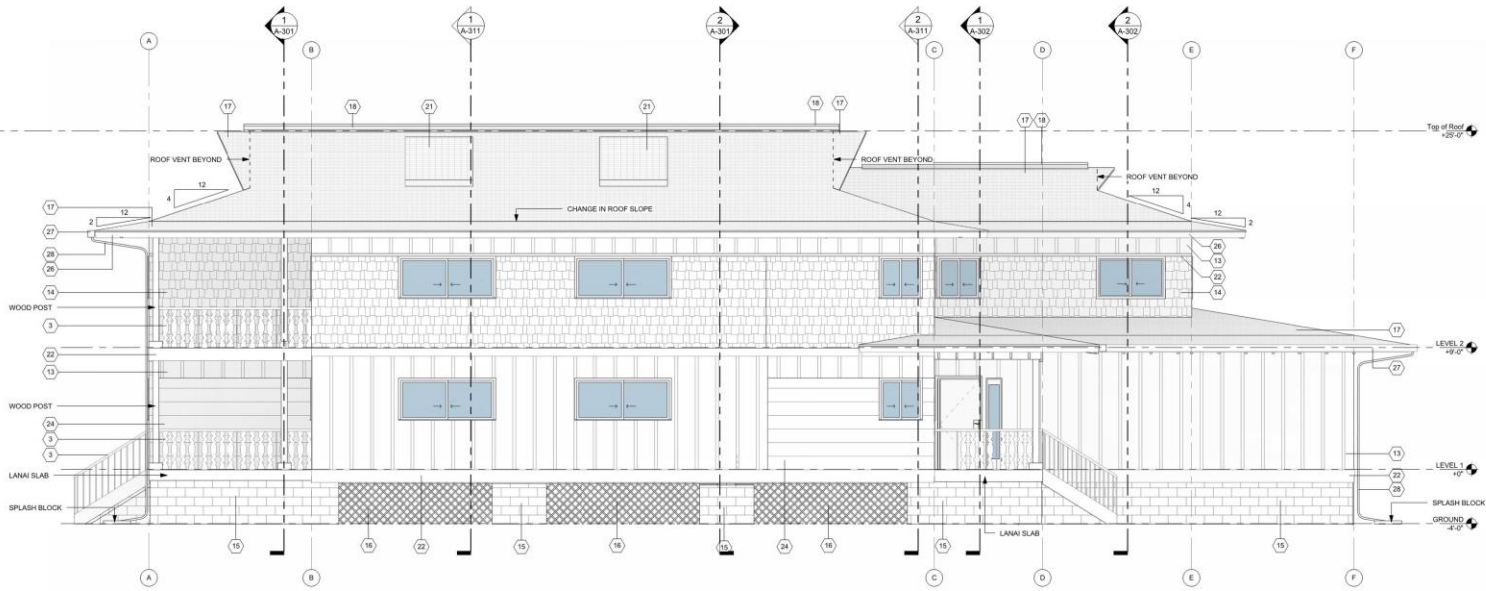
New Stacked Duplex Plan Flat





- KEYNOTES**
- 1 RAILING (SEE EXTERIOR ELEVATION)
 - 13 BOARD AND BATTEN SIDING
 - 14 CONCRETE SHINGLE PATTERN SIDING
 - 15 PAINTED SPLIT FACE CMU
 - 16 PRE-FINISHED FIBERGLASS LATTICE PANEL
 - 17 ARCHITECTURAL COMPOSITION SHINGLES
 - 18 CONTINUOUS VENT AT RIDGE
 - 21 SOLAR HOT WATER PANELS
 - 22 ARCHITECTURAL TRIM BAND
 - 24 SMOOTH LAP SIDING
 - 25 CUSTOM LOUVERS
 - 26 PAINTED FASCIA
 - 27 GUTTER
 - 28 DOWNSPOUT

2 ELEVATION D
1/4" = 1'-0"



1 ELEVATION C
1/4" = 1'-0"



Campus Planning and Construction

Two-Family Residence

LAIE, HI 96762

JOB CODE - 000000



THIS SEAL AND DESIGN ARE THE PROPERTY OF THE ENGINEER. ANY REPRODUCTION OR USE OF THIS SEAL OR DESIGN FOR ANY OTHER PROJECT WITHOUT THE WRITTEN PERMISSION OF THE ENGINEER IS STRICTLY PROHIBITED. SEE HAWAIIAN STATUTES, CHAPTER 461, SECTION 18-1 TO 18-12 FOR PENALTIES AND PROVISIONS.

FLAT PLAN

DATE ISSUANCE

REV. NO. DATE DESCRIPTION

EXTERIOR ELEVATIONS

Space Planner JRB
 Drawn By VL
 Reviewed By LHM
 Sheet Number A-202



New Stacked Duplex Plan Flat

